



Communities That Care (CTC) Success in Rural & Tribal Communities

Jaylynn Farlee



Welcome!

In the chat box, please share:

- Your name
- Where you're joining from
- Something you're hoping to gain from this session

Our time together

1

Participants will learn about challenges of installing and implementing the Communities That Care framework in a rural community.

2

Participants will be introduced to strategies for engaging local strengths to build a successful Communities That Care effort in a rural community.

3

Participants will be provided examples of various approaches used to establish an engaged and evolving Communities that Care process in a rural community.



THE KEYA FOUNDATION INC
WWW.KEYAFoundation.ORG

WÁOHOLA - WÓWICÁKHÉ
RESPECT - HONESTY

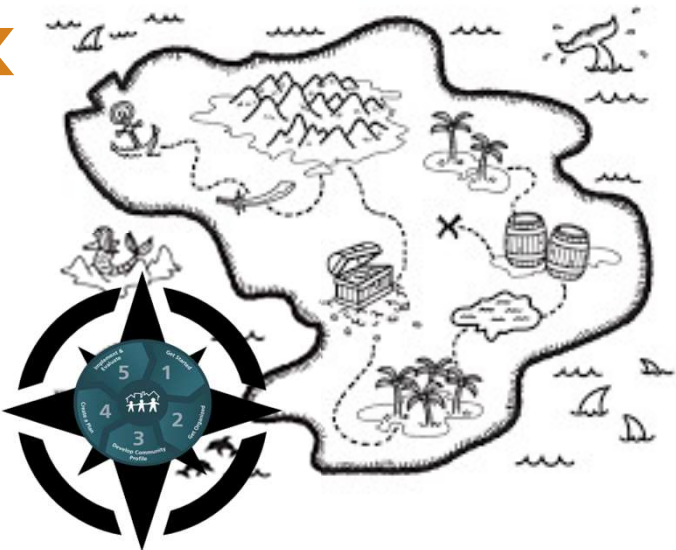


HOME OF THE COMMUNITIES THAT CARE COALITION

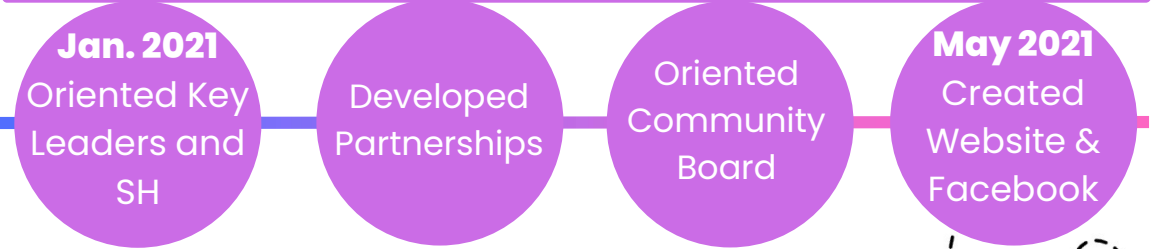
Journey through the Framework



Phase 1



Phase 2



Key Takeaways

- It's okay to ask for help from your team
- Can tailor framework and stay in fidelity
- Go the extra mile
- Know your community

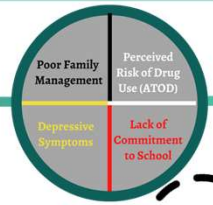


Phase 3

April 2021
Surveyed
Schools
(1st)

Received
Survey
Results

Presented
Survey
Priorities



Presented
Community
Assessment &
Program
Choices

Positive Action
&
Strengthening
Families

Strengthened
Partnerships

Phase 4

Jan. 2023
Presented
Community
Action Plan

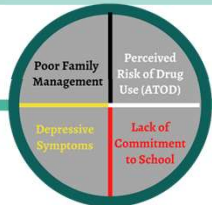
Sought
Funding

Strengthened
Partnerships

Phase 3

April 2023
Surveyed
Schools
(2nd)

Analyzed and
Reported on
Data



Strengthened
Partnerships

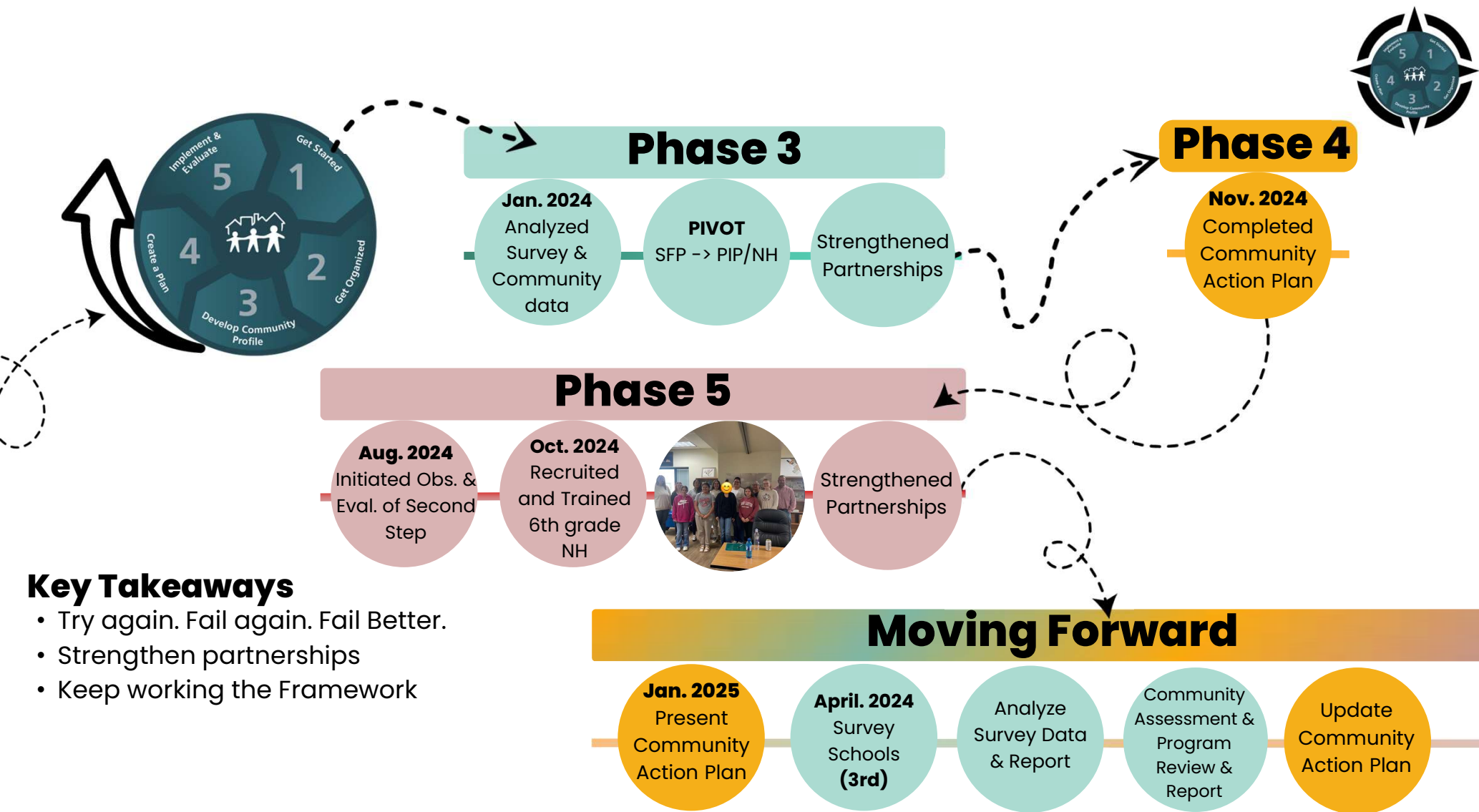
Phase 5

Aug. 2023
Initiated Obs. &
Eval. of Positive
Action

PIVOT
Positive
Action ->
Second Step

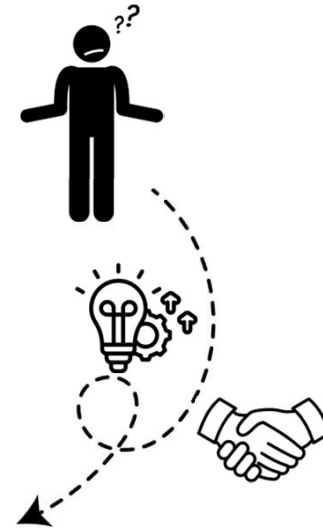
Sought
Funding





SDS Activity Evolution

2020

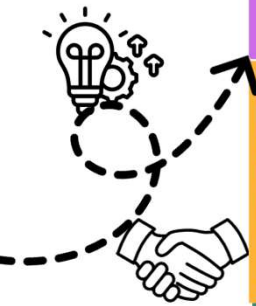


2021



2022





2023



2024



Key Takeaway

- Be consistent

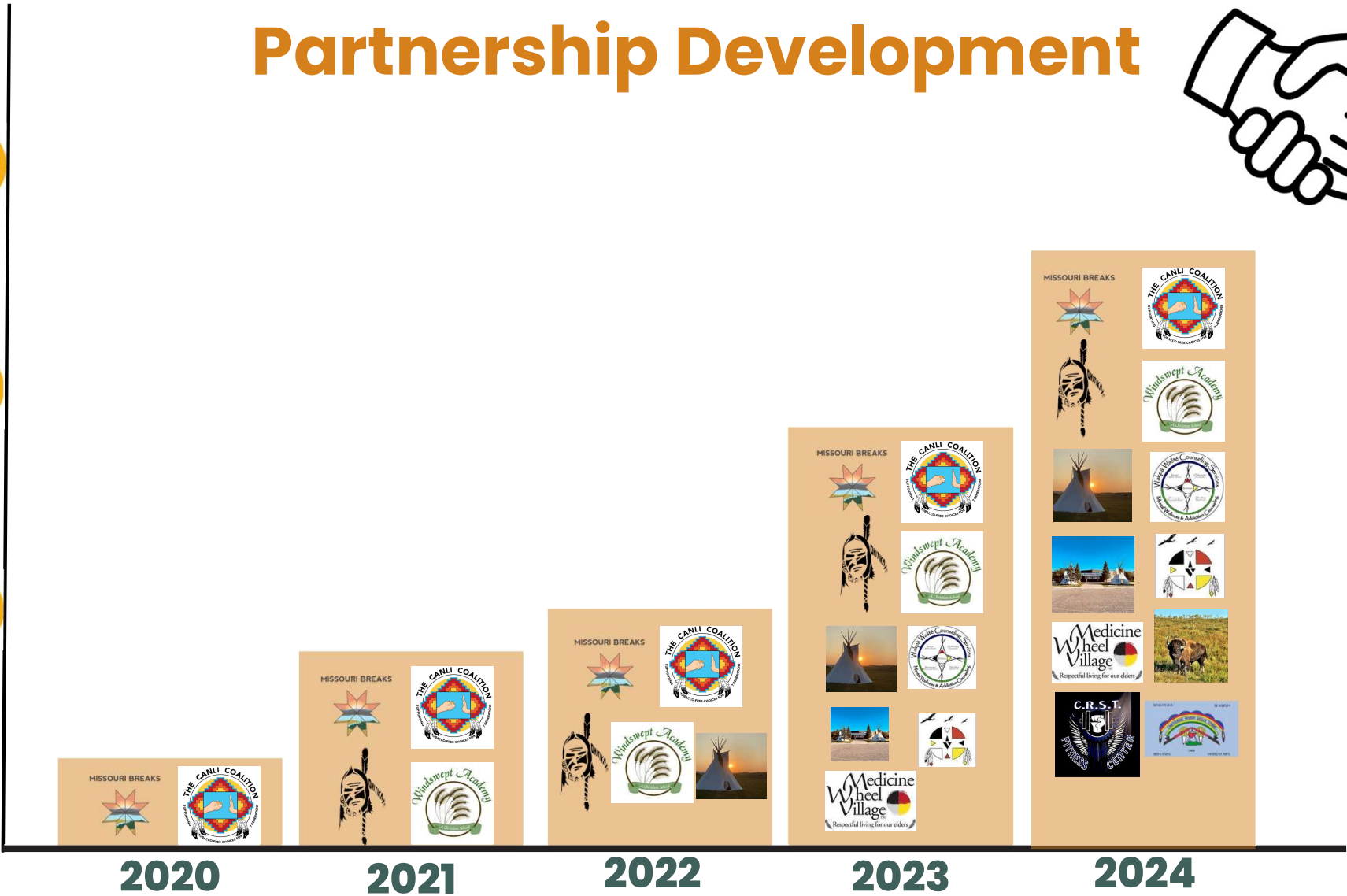
Partnership Development



15

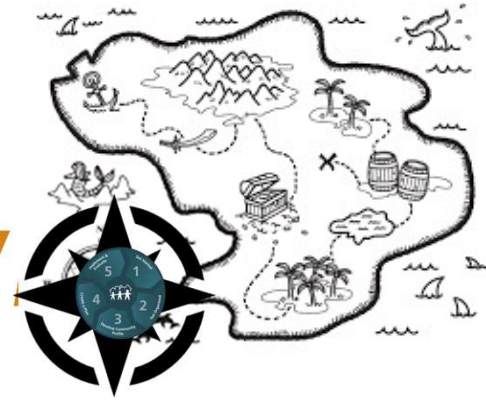
10

5

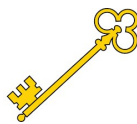




Treasure, Key and Anchor



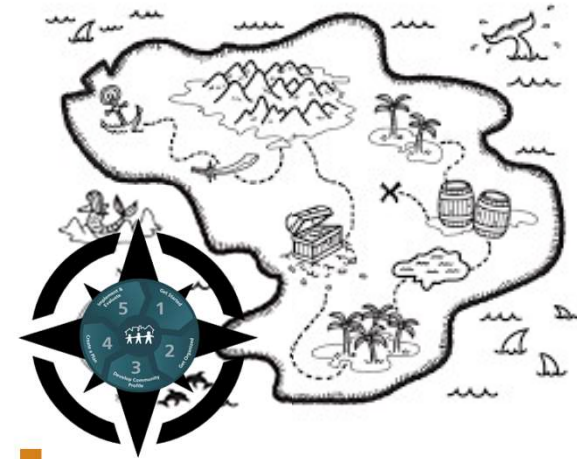
Treasure: Something positive to highlight about your work



Key: Something that could be further developed, or you are looking forward to



Anchor: Something that needs to be improved, or a challenge you are facing



Key Takeaways

- It's okay to ask for help from your team
- Can tailor framework and stay in fidelity
- Go the extra mile
- Know your community
- Try again. Fail again. Fail Better.
- Strengthen partnerships
- Keep working the Framework
- Be consistent



The Center for
Communities That Care

Thank You

jaylynn.farlee@mbiri.com

Visit Our Website

keyafoundation.org

