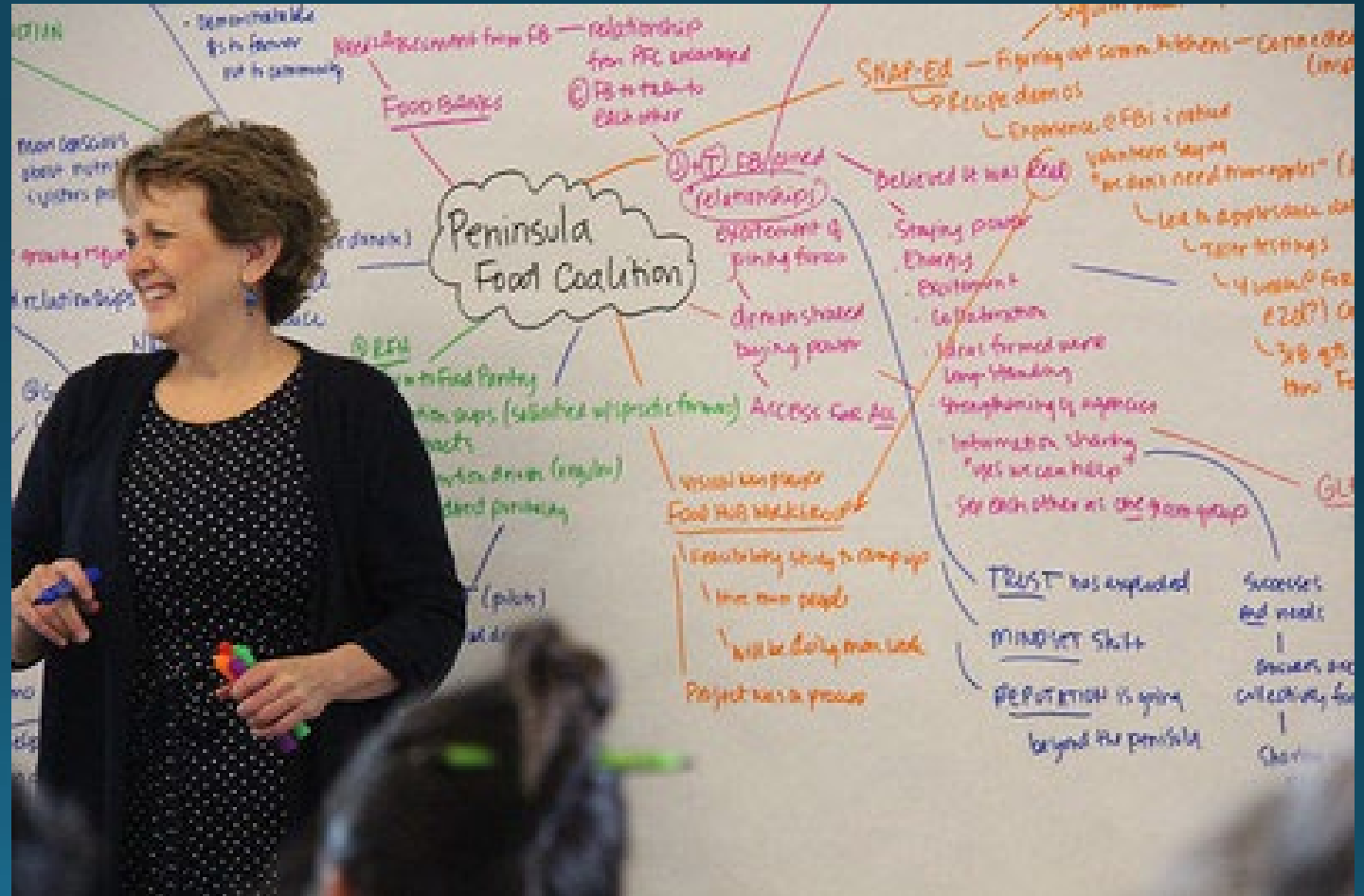


Ripple Effects Mapping

Capturing Impacts of Complex Work

*Debra Hansen, M.Ed.
WSU Extension Faculty*



Do you *ever*
feel like this
after
conducting
an evaluation?





**Your impact may
not be evident for a long time.**



**Participatory
evaluation**



**Intended and
unintended results**

Participant Benefits

Emerging patterns
& trends

Fun,
engaging,
visual

Positive &
hopeful
when seeing
results

Connect
to larger
purpose

Reflection & growth

Evaluator Benefits

When its difficult to conceptualize
and measure with other methods

Collects
stories &
impacts

Mid-program
or
Post-program

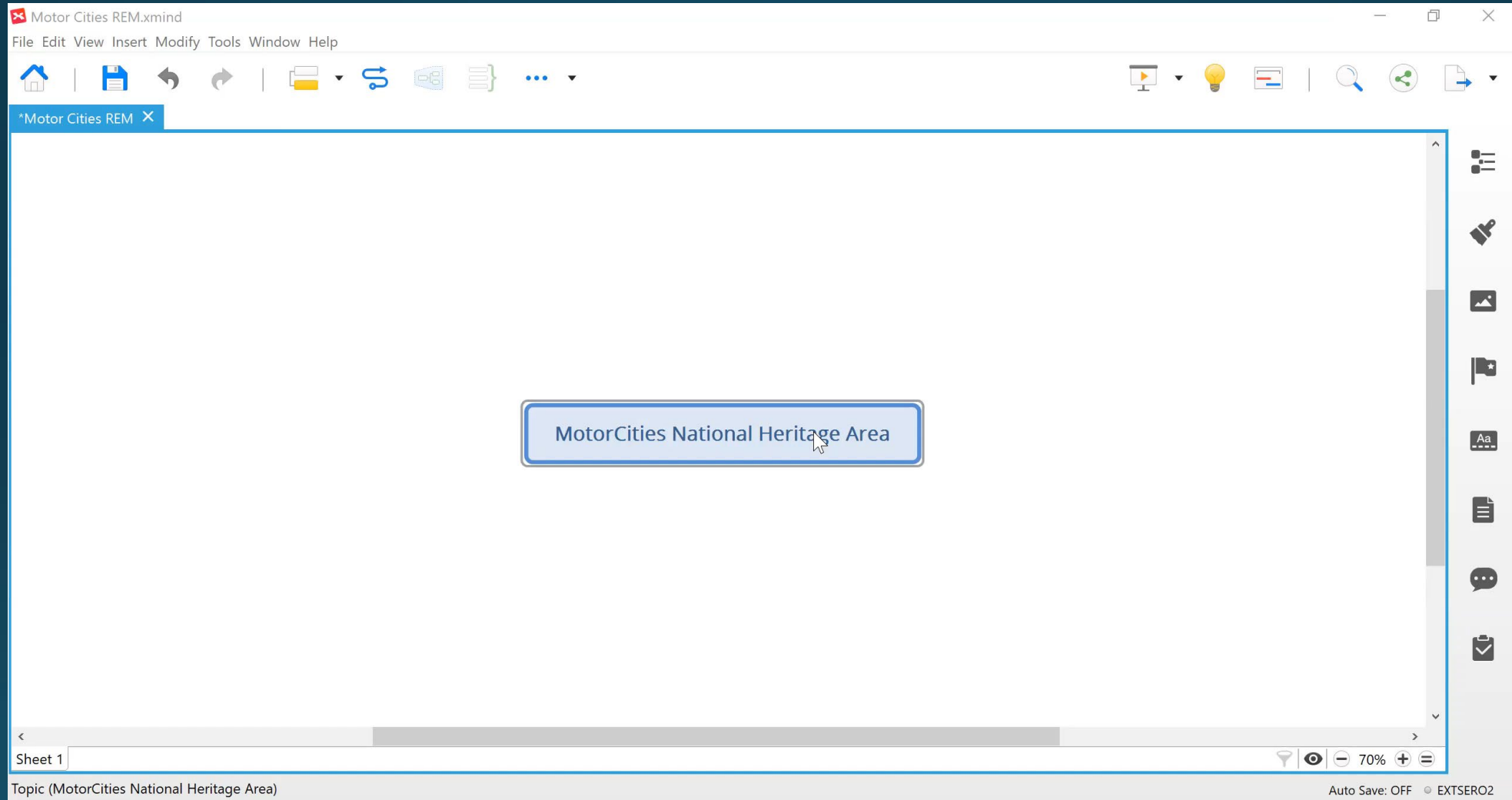
Captures
chain of
events from
complex or
evolving
work

Group
validation
of results

In Person REM Event



Virtual REM Session



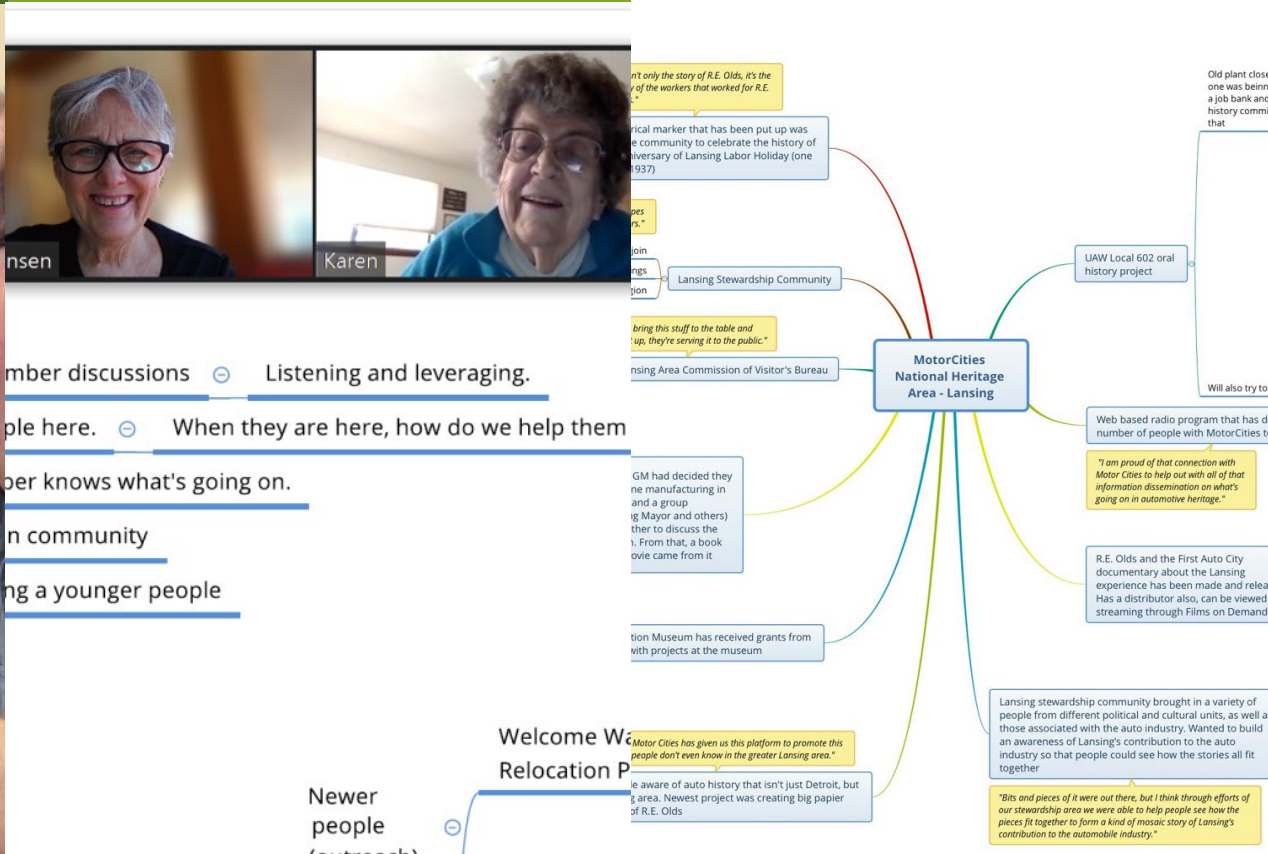


Interviews

Mapping (Live & Virtual)

Digitizing

Coding



1. Beth 2015-2016 (Program Director Northwest Harvest / first year VISTA)

1.1. Had been working in agriculture and s

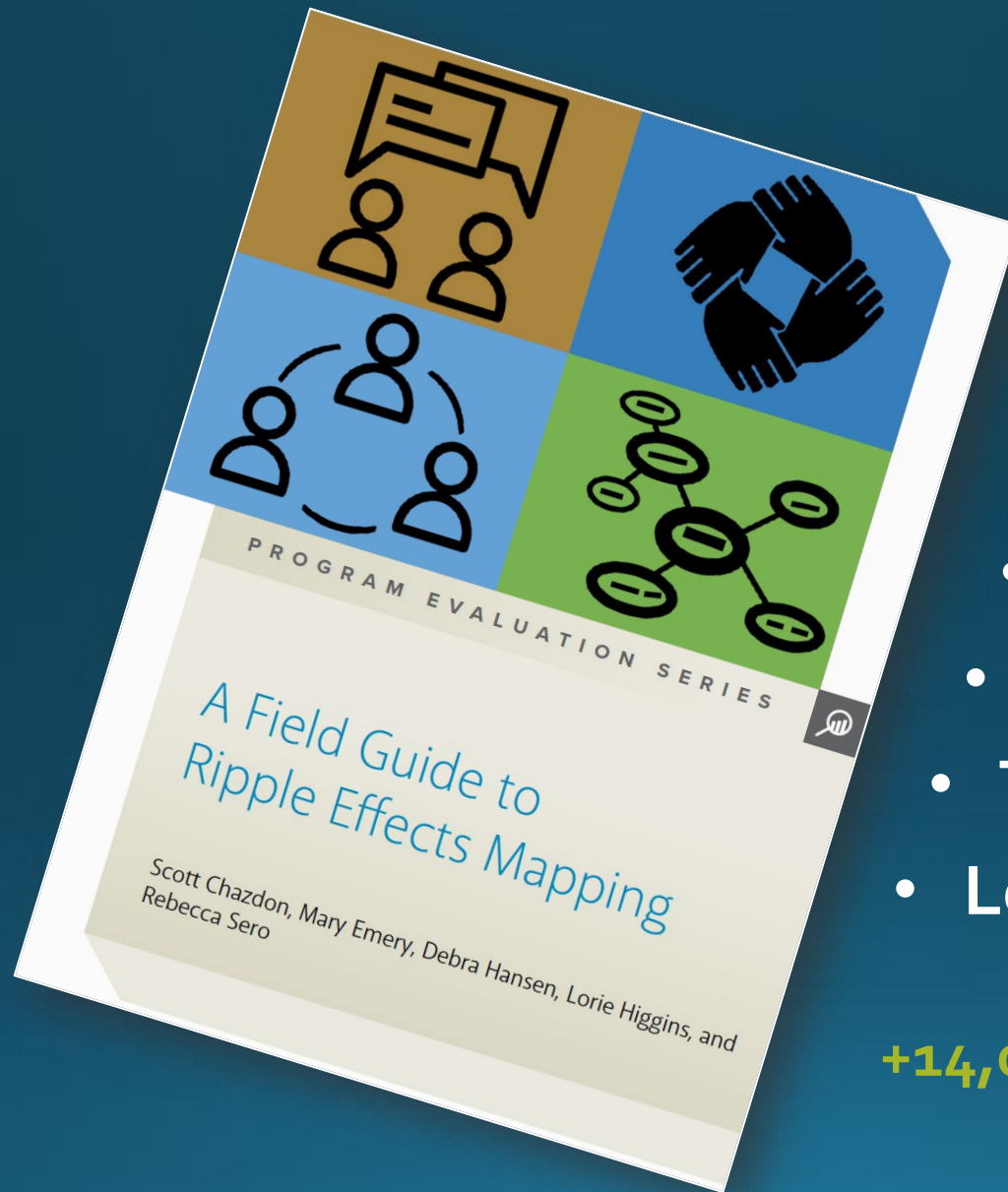
1.1.1. Very few entry level positions tha

1.1.1.1. Thinking about how to develop a larger group that is looking to bring change of your labor.

1.1.1.1.1. Gave her the chance to do what she's interested in. Management position VISTA Director and current position

1.1.1.2. Had the opportunity to build relationships (talked with a farmer across the state)

Where has it worked?



- 4-H Youth
- Food Systems
- Master Gardeners
- Farm Management
- Business Development
- Tribal Programming
- Leadership Development

+14,000 downloads in 18 countries!

Coalition Elements



Prevention Community Coalitions

Scott Waller, M.Ed.



O K A N O G A N
COUNTY COMMUNITY
COALITION

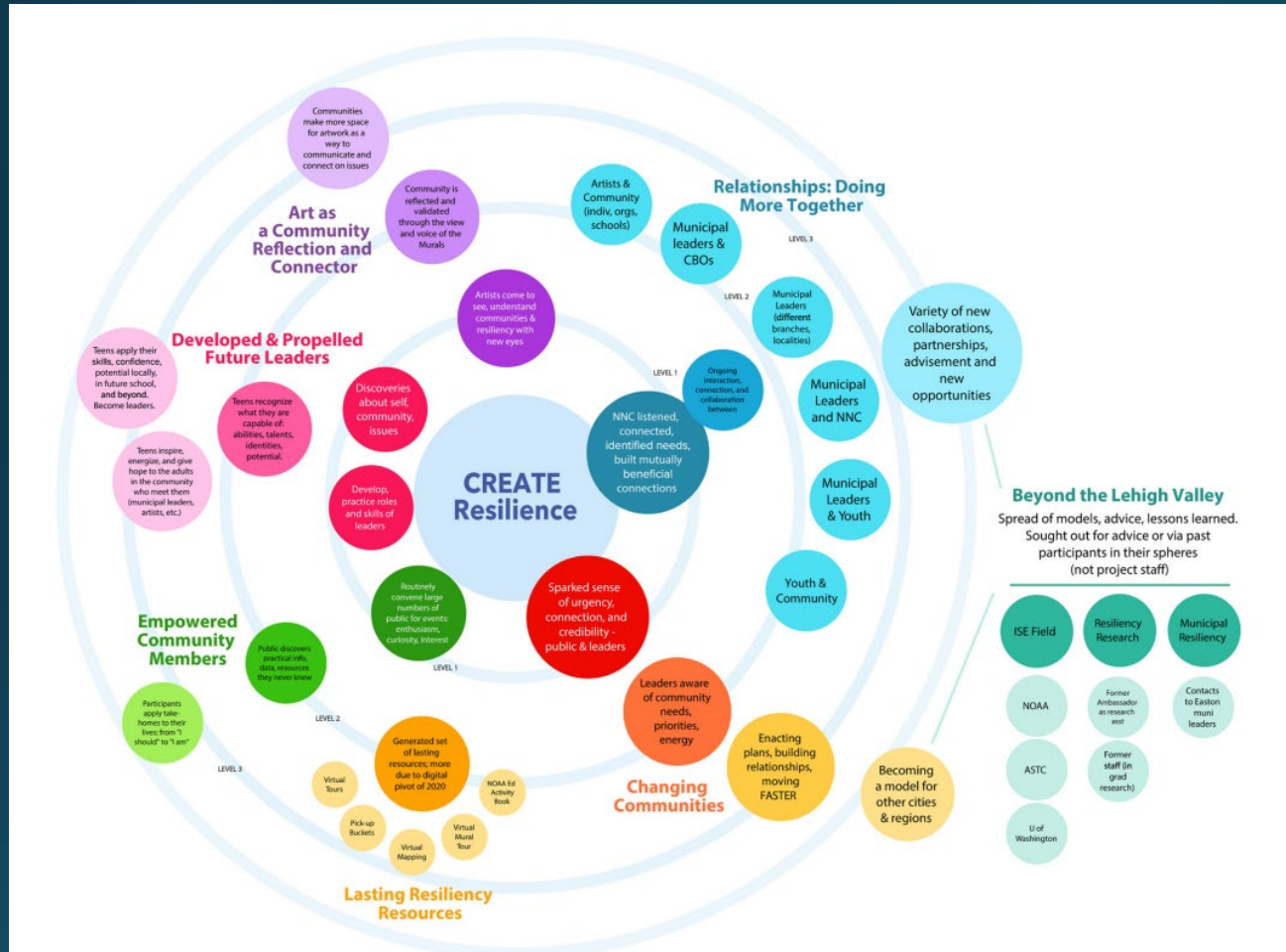
**Analytic Report on Ripple Effects Mapping for
Okanogan County Community Coalition, March
15, 2022**

Submitted by:

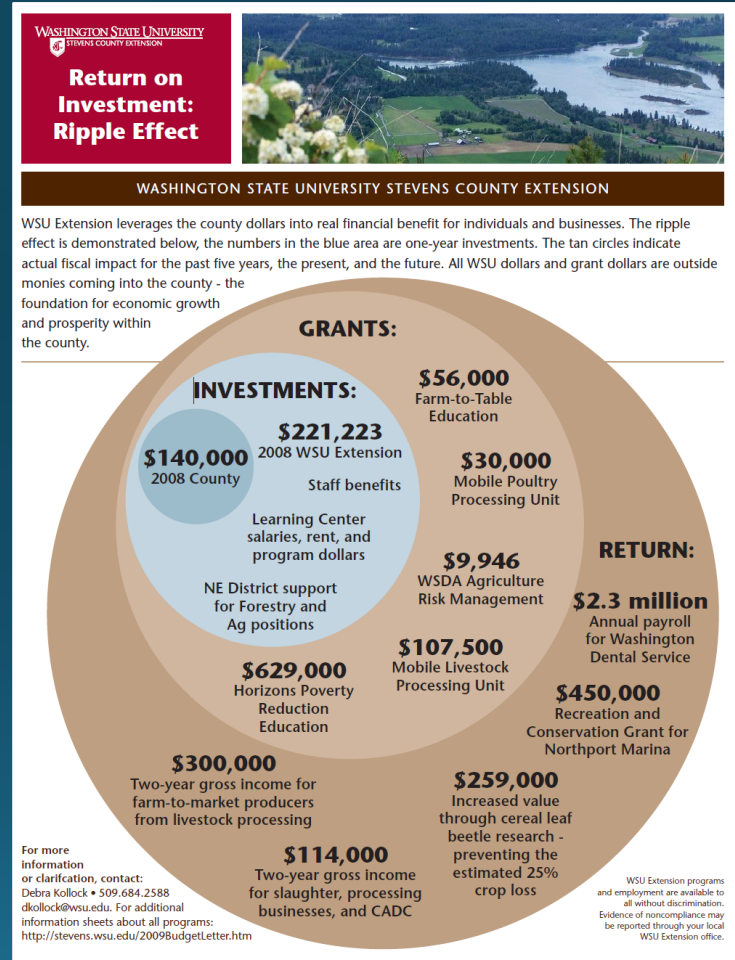
Scott Waller, M.Ed., CPP, and Rachel Montgomery, CPP

May 13, 2022

Creative Ways to Share the Data



Semmens, K. A., Carr, R. H., Maxfield, K., & Sickler, J. (2023). CREATE resilience through science, art, and community engagement.



Hansen, D., Local information presented to stakeholders to retain funding.

Presentations



We did this!



“We want to increase tourism
AND enhance the livability for people
who are already here.”

Chewelah Arts District Planning Team



Ripple Effects Mapping

Capturing Impacts of Complex Work



Debra Hansen, M.Ed.

Washington State University Extension
Professor and County Director

debra.hansen@wsu.edu



WSU EXTENSION
Stevens County